



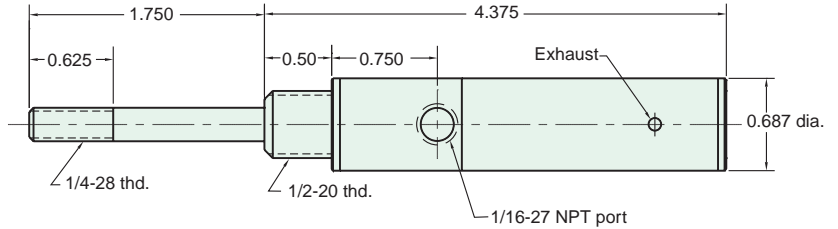
9/16" BORE BRASS HEAVY DUTY CYLINDER

9SS-AR-1

Mount: Stud
Type: Single Acting
 Spring Extended

Available Stroke Lengths: 1"

Add **-N** to the end of the part number for a non-threaded rod



Nut included, but not shown on drawing

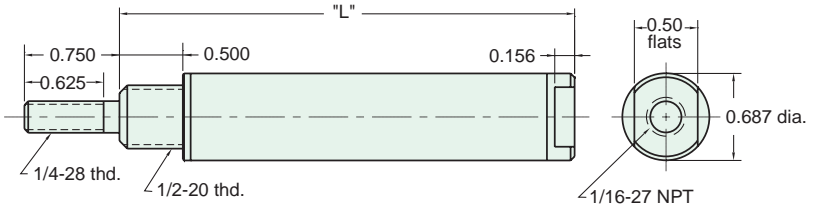
H9S-□S

Mount: Stud
Type: Single Acting
 Spring Return

Stroke Length "L"	1"	2"	3"
	3.593	5.250	6.906

To order: Indicate stroke in box □

Add **-N** to the end of the part number for a non-threaded rod



Nut included, but not shown on drawing

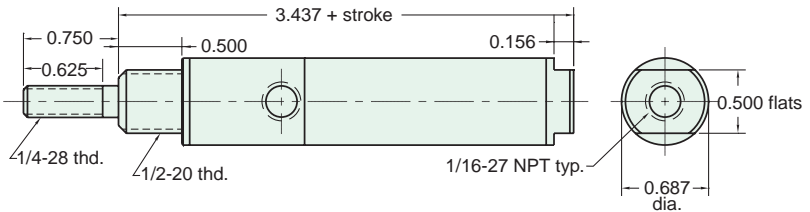
H9S-□D

Mount: Stud
Type: Double Acting

Available Stroke Lengths: 1", 2", 3", 4", 5", 6"

To order: Indicate stroke in box □

Add **-N** to the end of the part number for a non-threaded rod



Nut included, but not shown on drawing

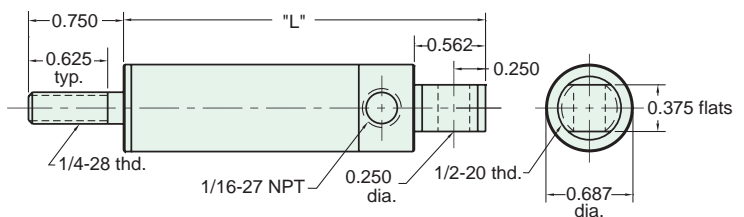
H9C-□S

Mount: Clevis
Type: Single Acting
 Spring Return

Stroke Length "L"	1"	2"	3"
	3.875	5.531	7.187

To order: Indicate stroke in box □

Add **-N** to the end of the part number for a non-threaded rod



Nut included, but not shown on drawing